

# One-time Opportunity!

AS *Unique* AS IT GETS



## Klipschorn®

*Museum Edition AK6-ME*

The genesis of something very special occurred in a tiny tin shed in Hope, Arkansas in 1946 when Paul W. Klipsch designed and hand built the legendary Klipschorn® loudspeaker. With ultra-high efficiency, wide dynamic range and incredibly-low distortion - to this day *nothing* is its equal. A true American icon, the Klipschorn has been meticulously crafted and proudly hand built in Hope, Arkansas for over 70 years.

**Now,** one lucky person can be the owner of a single pair of one-of-a-kind *Klipsch Museum Edition* Klipschorns, authorized by the Klipsch Museum of Audio History - and the purchase directly benefits the museum! This will be the first-ever Museum Edition product, bearing serial numbers ME001 and ME002.

Read on for the full list of *Special Features* included with this dazzling and truly unique offering.



**KLIPSCH**  
MUSEUM  
OF AUDIO  
HISTORY



**Klipsch**  
**HERITAGE**  
*Classic*



## KLIPSCHORN AK6 FEATURES

3-WAY FULLY HORN-LOADED LOUDSPEAKER

### FULLY HORN-LOADED

With its three-way system, each Klipschorn driver is coupled to a horn and optimized to operate in its individual pass-band. This allows the Klipschorn to be a staggering 10 to 20 times more efficient than other conventional loudspeakers. Higher efficiency yields greater acoustic power, which is generated with considerably less effort. The result is the cleanest, most dynamic sound possible throughout the entire musical range.



### NEODYMIUM TWEETER

The Klipschorn features a neodymium tweeter with a 1" polyimide diaphragm and copper clad aluminum voice coil. This lightweight diaphragm assembly and high strength magnet structure creates the tweeter's extremely high 109dB sensitivity and makes

it the most efficient consumer tweeter in the market. When coupled to a 90° x 40° Tractrix® horn, the tweeter sets new levels of performance for dynamic range and output. The phase plug design extends high frequency performance to 20kHz, meaning you hear the most subtle high frequency details better than ever.



### LOW FREQUENCY HORN DESIGN

The Klipschorn's folded low frequency horn has been redesigned and is now fully enclosed. This eliminates the need for the loudspeakers to be positioned tightly in the corner of a listening room. The speaker only needs to be in the proximity of

the corner to realize the horn's full performance. Additionally, the enclosed back provides positioning flexibility to angle the speaker to achieve the best stereo imaging.



### MIDRANGE ADVANCEMENT

According to Paul W. Klipsch, "the midrange is where we live" and is one of the most critical parts in any loudspeaker design. The Klipschorn's midrange utilizes a 2" compression driver mated to

a high efficiency exponential horn that maximizes the system's power and performance. As a result, less distortion is produced by the loudspeaker. That means clarity, accuracy and remarkable tonal definition.

### BUILT TO LAST

While each component of the Klipschorn is built to last, Klipsch has always recognized the unique and critical role of a loudspeaker's cabinet design in the sound reproduction process. Crafted from over a hundred wood panels, the Klipschorn enclosure is assembled using only the highest-grade adhesives and fasteners.

### BOOK-MATCHED WOOD VENEER

Klipsch only uses book-matched wood veneers for the Heritage series of speakers. The veneer leaves are kept in order as they are delicately sliced from the timber and precisely arranged to provide a mirror image at the splice joint – like turning the pages of a book. This gives each speaker an aesthetically appealing and consistent appearance that is treasured more than any other cut of wood veneer.

### MATCHED PAIRS

Each pair of Heritage series loudspeakers is grain-matched, using wood veneer panels that come from the same timber. Each cabinet is carefully matched so that each speaker in the pair is practically identical to each other. While the speakers move seamlessly together through assembly, each finished product is inspected and labeled with sequential serial numbers, ensuring that every Heritage series speaker leaves the factory as a meticulously crafted set.



### BI-AMP INPUT PANEL AND BINDING POSTS

The Klipschorn's premium, aluminum input panel accommodates large, high-quality speaker cables. Strong, versatile and quality binding posts provide the capability for bi-wiring or bi-amping. The quality continues with Audioquest Type 4 with

Star-Quad Geometry internal wiring featuring carbon-loaded insulation, nitrogen-injected PE and solid long-grain copper conductors.

### PREMIUM WIRE MANAGEMENT

The Klipschorn features a riser base that not only enhances the look of the speaker, but also improves the wire management so that speaker cables are cleanly hidden.





**KLIPSCH**  
MUSEUM  
OF AUDIO  
HISTORY

*Klipschorn*  
MUSEUM EDITION  
MODEL: AK6-ME  
S/N: 001 RIGHT / 001 PAIR

DESIGNED AND ASSEMBLED IN HOPE, AR

SIGNED MUSEUM EDITION PLAQUE

*Klipschorn*

## Museum Edition EXTRAS

### A RARE BEAST

In addition to the legendary acoustics and impressive upgrades already included in the AK6, the Klipsch Museum of Audio History is proud to offer a limited production of one (1) pair of unique Museum Edition Klipschorns - Numbered AK6 ME-001 and AK6 ME-002 - with official documentation verifying their provenance.

### HANDSOMELY APPOINTED

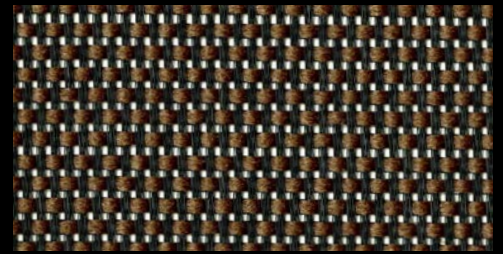
The units are custom veneered with **Black Limba** (*Terminalia Superba*), a beautiful West African species whose lower trunk wood yields deep, radiating markings. Often used for guitar bodies and heirloom boxes, Black Limba's grain pattern is said to be reminiscent of sound waves.

DuraCrest has been supplying Klipsch Heritage loudspeaker grilles for nearly half a century. To celebrate the creation of the *Museum Edition Klipschorns* they have crafted a resplendent woven licorice and chocolate cloth that expertly complements the Black Limba's depth and hue.

*"We have been tasked with the responsibility of doing what we do best... building beautiful grilles for Klipsch. We are calling it Klipsch #18-45 M. 18 is for the color designation, 45 is the number of years DuraCrest has been building grilles for Klipsch, and M for Museum." - Ralph Fortino Jr.*

### TRULY UNIQUE

Official *Museum Edition* plaques are affixed to the rear of each speaker enclosure - numbered and hand-signed by Roy Delgado, Jr. - PWK protégé and acoustic designer of the Klipschorn AK6. The Museum Edition Klipschorns also feature hand-matched AK6 crossover networks and drivers, personally selected by Roy.



#18-45 M GRILLE CLOTH



BLACK LIMBA VENEER (FINISH MAY DIFFER FROM SHOWN)



ROY DELGADO, JR.

### YOUR PURCHASE DIRECTLY SUPPORTS OUR CAUSE

100% of the proceeds from the sale of this exclusive pair of Klipschorn AK6 Museum Edition loudspeakers will go directly to the Klipsch Museum of Audio History, supporting its mission to proliferate the scientific principals and preserve the archives of Paul W. Klipsch.

### LIFETIME MUSEUM MEMBERSHIP INCLUDED

Your purchase includes a lifetime **Khorn Corps** membership to the Klipsch Museum of Audio History. You will receive a personalized plaque for home display, your named plaque on display in the Klipsch Museum of Audio History Hall of Fame, a monogrammed logo polo shirt and invitations to members-only events held during Klipsch Pilgrimage week each year.



**KLIPSCH**  
MUSEUM  
OF AUDIO  
HISTORY



# Greetings from the Dawn of Hi-Fi!

*Paul W. Klipsch* (PWK) was an American audio pioneer, a true eccentric and a proud member of the *Engineering and Science Hall of Fame*. He gave rise to technologies that would forever impact generations of music lovers. He left an amazing legacy for you to discover.



KLIPSCH LOUDSPEAKER FACTORY  
HOPE, AR – CIRCA 1958

KLIPSCHORN LOUDSPEAKER  
STILL MADE IN HOPE TODAY





# About Us

*We believe* in the importance of science in education, the spirit of discovery, and good 'ol American ingenuity. As a non-profit organization, the Klipsch Museum of Audio History is dedicated to preserving and sharing the technological discoveries, artifacts, and principles of Paul W. Klipsch.

*Imagine* stepping back in time to the very beginning of great sound. Real, dynamic music was heard in living rooms for the first time - nearly mimicking the power of a live performance. In 1946, Paul W. Klipsch changed the face of the audio industry by inventing, discovering, hypothesizing, and proving that it was darn well possible to make and reproduce exciting, explosive, accurate audio. Along the way, PWK worked with industry giants, famous pop stars, and some of the smartest people in the world - always in search of a better sound.

*Witness* many wondrous sonic inventions that have stood the test of time to become what some audiophiles consider to be their most revered possessions. Fair warning - Klipsch speakers have been called a "religious experience" by more than a few.

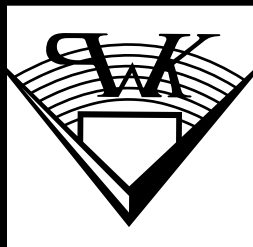
*Hear* fantastic stories about the "madman from Hope" and his adventures in the air and on the ground.

*Relive* fascinating audio history from the dawn of hi-fi with an incredible one-of-a-kind collection of artifacts, memorabilia and imagery.

*Plan your visit today!* We would love to have you tour our collection and hear our stories. They're good ones.

*Consider becoming a member* to assist with our philanthropic endeavors and to receive additional member benefits. Gifts are tax deductible in the U.S.A. The Internal Revenue Service recognizes Klipsch Museum of Audio History as a Section 501(c)(3) public charity.

Visit [klipschmuseum.org](http://klipschmuseum.org) for more information.



**KLIPSCH**  
MUSEUM  
OF AUDIO  
HISTORY





Klipschorn®

## THE GREAT AMERICAN CLASSIC

As the only speaker in the world to be in continuous production for over 70 years, the Klipschorn has remained relatively unchanged since its inception. The Klipschorn enclosure is still made in the USA, by proud craftsmen in Hope, Arkansas. Just like Paul W. Klipsch intended.

## SPECIFICATIONS

FREQUENCY RESPONSE (+/- 4 dB)	33Hz - 20kHz
SENSITIVITY <sup>1</sup>	105dB @ 2.83V / 1m
POWER HANDLING (CONT/PEAK)	100W/400W
MAXIMUM SPL	121dB Continuous
NOMINAL IMPEDANCE	8 ohms Compatible
CROSSOVER FREQUENCY	HF: 4500Hz MF: 450Hz
HIGH FREQUENCY DRIVER	K-771 1" (2.54cm) light-weight Polyimide diaphragm compression driver mated to a 90 x 40 Tractrix horn
MIDRANGE	K-55-X 2" (5.08cm) Phenolic diaphragm compression driver
LOW FREQUENCY DRIVER	K-33-E 15" (38.1cm) Fiber-composite cone woofer with a trihedral exponential folded horn
ENCLOSURE MATERIAL	Birch Plywood and MDF
INPUTS	Dual binding posts / bi-wire / bi-amp
HEIGHT	53" (134.62 cm)
WIDTH	31.25" (79.38 cm)
DEPTH	28.25" (71.75 cm)
WEIGHT	220lbs (100 kg)
FINISH	Black Limba - FINISH MAY DIFFER FROM SHOWN!
GRILLE CLOTH	Klipsch #18-45 M

<sup>1</sup> Sensitivity in average listening room

All specifications are subject to change without notice. ©2018 Klipsch Group, Inc. Klipsch and Tractrix are registered trademarks of Klipsch Group, Inc. A wholly-owned subsidiary of Vow International Corporation.

**Klipsch**  
**HERITAGE**  
*Classic*





## HOW TO PURCHASE

A single pair of Klipschorn AK6 Museum Edition loudspeakers are offered for sale to the public for **\$18,573<sup>00</sup>** (after the 73rd year of Klipschorn production), including shipping inside the continental United States. No international sales will be entertained.

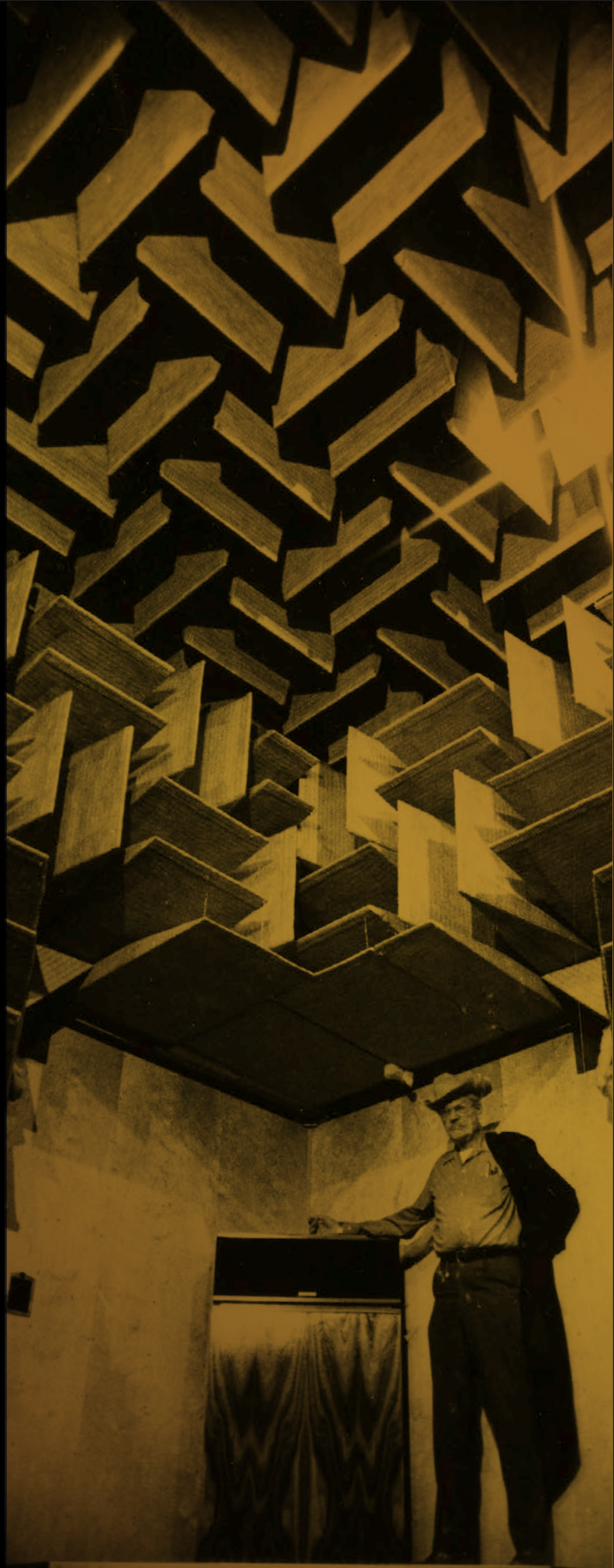
To own this exquisite set of ultra-premium loudspeakers, please email **[travis@klipschmuseum.org](mailto:travis@klipschmuseum.org)** with your commitment to purchase. This offer is first come, first served - determined by email time stamp. Serious inquiries only, please.

## Special THANKS

We appreciate the continued support and generous donation from Klipsch Group, Inc (KGI). and Paul Jacobs - KGI President and CEO, and KHMA Trustee - who made this offer possible. Klipsch Group, Inc. is one of the largest, most respected loudspeaker manufacturers in the world today. They still hand-build speaker cabinets in the very same factory PWK created, right across the street from the Klipsch Museum of Audio History.

Special thanks to:

- Jim Hunter, Curator, KHMA
- Travis Williamson, KHMA Trustee
- Roy Delgado, Jr., Sr. Engineer, KGI and KHMA Trustee
- Matt Sommers, Sr. Creative Director, KGI and KHMA Trustee
- Sharyl Williams, Buyer, KGI and Member of KHMA
- Jerry Calhoon, Plant Manager, KGI
- Terry Willis, Finishing Department Supervisor, KGI
- Jake Townsend, Final Assembly Supervisor, KGI
- Chris Williams, Production Engineering, KGI
- Martin Hernandez, Mill Supervisor, KGI
- All of the men and women at the Klipsch Loudspeaker Factory in Hope, AR who have been making the world-famous Klipschorn with pride for the better part of a century.
- GL Veneer, Inc. - Javier Sandoval, Project Coordinator
- DuraCrest Fabrics



**KLIPSCH**  
MUSEUM  
OF AUDIO  
HISTORY



**KLIPSCH  
MUSEUM  
OF AUDIO  
HISTORY**

*Contact Us*

833-794-5287

[info@klipschmuseum.org](mailto:info@klipschmuseum.org)

P.O. Box 280 Hope, AR 71802

*Visit Us*

136 Hempstead 278 Hope, AR 71801

Open 10AM-2PM • Wednesday - Friday

*Follow & Donate*

Website: [klipschmuseum.org](http://klipschmuseum.org)

FaceBook: [@klipschmuseum](https://www.facebook.com/klipschmuseum)

Support: [smile.amazon.com](https://www.smile.amazon.com)

SUBJECT Four-inch driver with  
and without K-260 Horn

CALIBRATE Zero ~ 100 dB SPL

REMARKS:

MIC  
DIST  
OFF AX  
HEIGHT  
MIC GA  
SOURCE

©2019 KLIPSCH HERITAGE MUSEUM ASSOCIATION, INC. DBA KLIPSCH MUSEUM OF AUDIO HISTORY. ALL RIGHTS RESERVED.

KLIPSCH, THE PWK SEAL AND KLIPSCHORN ARE REGISTERED TRADEMARKS OF KLIPSCH GROUP, INC. USED BY PERMISSION AND ©2019 KLIPSCH GROUP, INC., A WHOLLY-OWNED SUBSIDIARY OF VOXX INTERNATIONAL CORP.